

SKAGIT COUNTY
MOUNT VERNON, WASHINGTON

Purchase of New Equipment

Skagit County is an Equal Opportunity Employer

SEALED BIDS will be received and publicly opened in the Commissioners' Hearing Room, Skagit County Administration Building, Suite 100, 1800 Continental Place, Mt. Vernon, Washington 98273, on **Monday, April 3, 2017 at the hour of 2:30 P.M.**, or as soon thereafter as possible, for the following equipment for Skagit County:

ONE NEW LATEST MODEL BOOM TRUCK CHASSIS

1. The successful bidder must deliver the truck, ready for use, to Burlington, Washington.
2. Bidders must submit with their proposals, complete manufacturer's specifications and warranties covering the equipment bid.
3. For each separate proposal, the total price to Skagit County must be shown. No adjustments, credits, rebates, or other charges by the bidder will be considered after the bid opening.
4. Bids must be accompanied by a bid deposit in the form of cash, a cashier's check, a certified check, or a surety bond in the amount equal to FIVE PERCENT (5%) of the amount of the bid proposed.
5. The bid deposits of all unsuccessful bidders will be returned after the bid is awarded. The bid deposit of the successful bidder will be retained by Skagit County until receipt of and acceptance of the equipment by the County.
6. Delivery of this unit by August 30, 2017 is required. (see #9 for details related to delivery of unit on time)
7. The Board of County Commissioners will award the bid to the lowest or best bid, taking into consideration: price, probable future maintenance costs based on proximity and availability of parts and service, warranties offered, and other factors that will contribute toward their exercising judgment to obtain the best value for the County. The Board reserves the right to waive minor irregularities in the bidding.
8. Bid envelopes must be clearly marked on the outside, "Sealed Bid for One New Latest Model Boom Truck Chassis to be opened at 2:30P.M., April 3, 2017", and must be delivered to the office of the Skagit County Commissioners prior to bid opening time. Bids received and not so marked will not be considered.

Mailing Address: Skagit County Commissioners
County Admin. Bldg., Suite 100
1800 Continental Place,
Mount Vernon, WA 98273

9. Payment will be made within 30 days of receipt of and acceptance of the equipment by the County. The County may assess liquidated damages against the vendor in the amount of 1% of the dollar value of the total bid award amount for each week that any of the items are delivered past the agreed upon delivery date of August 30, 2017, up to a maximum of four weeks past the agreed upon delivery date, or to a maximum of 4% liquidated damages (1% for up to four weeks).

BID ITEM: ONE NEW LATEST MODEL BOOM TRUCK CHASSIS

1.01 The purpose of this Call for Bids is to purchase one new boom truck chassis in the 58,000 Gross Vehicle Weight Rating (GVWR) range. This truck will be used by Skagit County's Operations Division to haul and install guardrail, lift and haul pumps from pump stations, trim trees, change light bulbs on sports fields and for a variety of other tasks. Installed on the chassis will be a knuckle boom crane (behind cab) and an 18' long flatbed. This unit will be equipped to tow a tilt bed trailer rated at 50,000 GVW. The entire truck/trailer combination must be comprised of components capable of handling a Gross Combination Weight Rating (GCWR) of 100,000 pounds.

1.02 Specifications pertaining to wheel base and cab-to-trunion are not absolute. The knuckle boom and outriggers take up approximately 5 feet of frame behind the cab and an 18' flatbed will be mounted behind the knuckle boom and outriggers. Weight distribution is expected to allow a maximum load to be carried on each set of axles. The successful bidder will be required to present a diagram that depicts a legal weight distribution, by axle. It is expected that this truck will be able to legally gross at a minimum of 58,000 pounds.

1.03 A minimum of two hours instruction on the operation and maintenance of this unit, by a factory trained technician, will be included in this bid and provided near the time of delivery.

CAB & CHASSIS

List Manufacturer: _____ List Model: _____ List Production Year: _____

REQUIREMENTS/SPECIFICATIONS:

CONFORMANCE (Yes/No)

A. CHASSIS

- | | |
|--|-------|
| 1. GVWR (by manufacturer) 58,000 LBS., minimum: | _____ |
| 2. G.C.W.R. to 100,000 LBS: | _____ |
| 3. Manufacturer's standard set-forward axle: | _____ |
| 4. Wheelbase measurements (See attached sketch from Palfinger on page 9) | |
| a. Provide a profile drawing: | _____ |
| b. List wheelbase, approximately 236 inches: | _____ |
| c. List cab to trunnion, approximately 170": | _____ |
| d. List cab to back of frame, approximately 274": | _____ |

B. ENGINE AND EQUIPMENT

1. Cummins ISX 450 electronic engine or equal, turbo charged, with air to air-cooling. Mid stop cylinder liners. 450 HP at 1650 rpm and 1650 FT-LB torque at 1200 RMP. List engine: _____
 - a. List max HP rating offered for this engine (Example: 450 or 470): _____
 - b. Include "Jacob" engine brake and heavy duty mounting package: _____
2. Hand or electric fuel primer pump: _____
3. Engine oil cooler: _____
4. Gear reduction starting motor: _____
5. Batteries (3) 12 volt 2775 CCA: _____
6. Aluminum battery box cover: _____
7. Battery disconnect switch, mounted in cab under driver's seat: _____
8. 160 amp alternator, 12 volt, pad mount: _____
9. Bendix 19.0 CFM air compressor: _____
10. Spin on fuel filter and Racon or equal micron fuel water separator / fuel pre filter: _____
11. Engine block heater: _____
12. Horton fan clutch or equal: _____
13. Exhaust System – single, horizontal, after treatment devise frame mounted – right side under cab. Vertical tail pipe and guard, right-hand, stainless steel shield, include turnout tail pipe: _____
14. Premium radiator and heater hoses, required: _____
15. PTO provisions, Body Company will supply PTO itself:
 - a. PTO location right side of transmission: _____
 - b. Remote Engine control: _____

C. TRANSMISSION AND CLUTCH

1. Fuller RTLO (F) – 18918B 18 Speed, with oil cooler: _____
2. 1810 series driveline: _____
3. Clutch: Eaton Fuller 1552, 15.5" Diameter ceramic clutch
w/ torque limiting clutch brake, 1860 lb. ft. torque capacity: _____

OPTION 1 (Secondary Proposal on bid tab): AUTOMATIC TRANSMISSION

1. 4500-RDS-P Allison 6-Speed Transmission with oil level sensor,
PTO provision, less retarder: _____
2. Automatic neutral – transmission will shift to neutral when parking brake is
engaged and remains in neutral when parking brake is disengaged: _____

D. FRONT AXLE

1. Set-Forward front axle; 18,000 pounds, wide track with
threaded style shackle pins: _____
2. Taper leaf springs of equal weight to front axle, to include
shock absorbers: _____
3. Stemco oil seals, steel hubs: _____
4. 16.5" x 6" Q type cam brakes: _____
5. Power steering required: _____
6. Bendix auto slack adjusters: _____
7. Tires; 385/65R22.5, Load Range L: _____
8. Wheels; 22.5X12.25 non-polished aluminum bud wheels:
hub piloted. _____

E. REAR AXLES

1. Tandem rear axles (.433 wall thickness), 40,000 pound capacity
(Eaton DD404P or equal), 4.11 to 1 ratio, four-way axle interlock with
power divider lockout: _____
 - a. Add separate dash mounted switches to control axle lockups: _____

2. Hendrickson HMX-400-54 walking beam type 54" with rubber end bushings, transverse torque rods less shock absorbers: _____
3. Air cam brakes, S-cam 16.5" x 7" out board drums with Bendix ASA-5 auto. slack adjusters: _____
4. 3030 park brake, air lines to have fittings at can: _____
5. Tires; 11.00 R 22.5 16 ply, w/ traction tread: _____
6. Wheels; painted white, steel bud wheels, Hub piloted: _____

F. FRAME AND EQUIPMENT

1. Fully reinforced "C"-channel steel alloy frame; 120,000 psi, 29.0 inch Section Modules and 3.5 million RBM: _____
2. Minimum, two air reservoirs with total capacity of 7,488 cu. in. with check valve between tanks: _____
3. Aluminum fuel tank mounted on left side under cab, 100 gallon capacity: _____
4. DEF tank mounted on left side, 9 gallon minimum capacity: _____
5. Heavy duty all steel front bumper (swept back) with: 2 tow hooks, no middle mounted eye: _____
6. Front fender extensions: black rubber: _____

G. AIR AND TRAILER EQUIPMENT

1. Run air lines and electrical connections to the back of the frame for a tilt bed equipment trailer: _____
 - a. Run wires for a 7-way plug (by body supplier): _____
 - b. Bendix AD-IP air dryer w/ heater and moisture ejection valve, include spin on filter if available: _____

H. CAB AND EQUIPMENT

1. Conventional style cab: _____
2. Automotive type hinges required for doors: _____

3. Cab air conditioning, include HVAC fresh air filter: _____
4. Arm rest on both doors: _____
5. Fully insulated and padded cab, thermal noise reduction with insulation and padding in walls, floor and ceiling: _____
6. Chrome grill, non-stationary: _____
7. Seats:
 - a. Driver's seat, National air suspension, high back with integral headrest, Vinyl, I chamber lumbar with 2 position frond cushion, Angle back rest, arm rest on right side: _____
 - b. Passenger seat, National air suspension, high back with integral headrest, Vinyl, I chamber lumbar with 2 position frond cushion, Angle back rest, arm rest on left side: _____
8. Air ride cab suspension: _____
9. Heater with integral defrosters: _____
10. Sun visors, coat hooks, dome/reading light: _____
11. Rubber floor liner with insulated backing (no carpet), include (2) removable rubber floor mats: _____
12. Circuit breakers in place of fuses required: _____
13. Electric intermittent windshield wipers: _____
14. Turn signals, self canceling: _____
15. Heated 6 way rear view mirrors, breakaway type with both sides being motor adjustable: _____
16. Single air horn: _____
17. All glass to be heat absorbing, tinted: _____
18. Five LED marker lights mounted on top of cab: _____
19. Radio - AM/FM with Bluetooth, USB Input and two speakers: _____
20. Windows electrically controlled by passenger or operator: _____

21. Dual grab handles (interior and exterior)
Exterior to be chrome towel bar type: _____
22. Exterior sun visor: _____
23. (2) cup holders: _____
24. Tilt-telescoping steering: _____
25. Fire extinguisher and first aid kit: _____
26. Exhaust switch to inhibit diesel particulate filter regeneration as long as switch is on: _____
27. Electric back up alarm: _____
28. Dash toggle switches to include 6 spares, Minimum 20 amp circuits each, Wiring harness exterior back of cab on left side: _____
29. All Lighting to be LED: _____
30. Gauges and Meters
- a) Air pressure application (dual): _____
 - b) Engine oil pressure: _____
 - c) Voltmeter: _____
 - d) Speedometer, tachometer, and hour meter: _____
 - e) Fuel level: _____
 - f) Air filter restriction indicator: _____
 - g) Engine temperature: _____
 - h) Ambient temperature gauge mounted in cab: _____
 - i) Fault code display: _____
31. Park brake alarm, alarm sounds when you open door if park brake is not set: _____
32. Prewiring
- a) Prewired for C.B. radio (power and ground), include external speaker
Do not include antenna: _____
 - b) Prewired for center of header mounted two way radio in cab with 20 Amp fuse protection: _____
 - c) Prewire for (2) flood type lights to be mounted behind the cab, switch on and off in the cab: _____

I. PAINT

1. Basecoat/urethane clear coat white paint: _____

J. STANDARD REQUIREMENTS

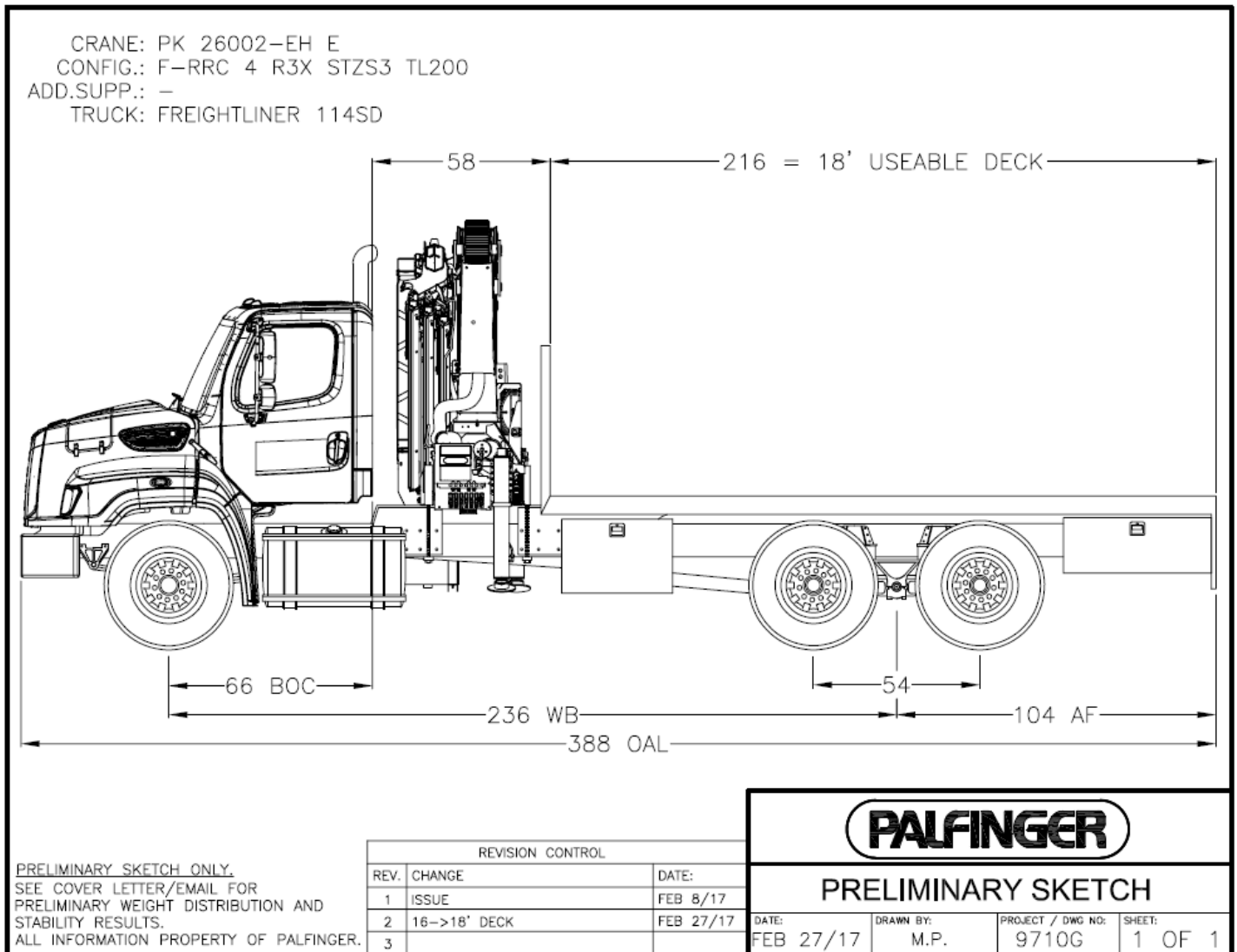
1. All seat belts, lights, turn signals (self canceling) and safety equipment required to meet all code requirements for the vehicle to be driven on the highways in the State of Washington: _____
2. Paper manuals (2 operators and 1 parts and 1 service) are required: _____
3. All other features of the manufacturer's standard production model are required: _____
4. Provide software package for engine and components: _____
5. Minimum of two hours instruction on the operation and maintenance of this unit, by a factory trained technician: _____
6. Pick up and delivery of truck from any location in Skagit County for warranty work is required: _____
7. List warranties on Chassis: _____
8. List any features, not listed above but included in your bid, that can be considered of value to the County: _____
9. Will you be able to provide a chassis by September 30, 2017? YES or No

Details about **OPTION 1: AUTOMATIC TRANSMISSION**

Allison 6-speed Transmission with oil level sensor, PTO provision, less retainer and include automatic neutral (transmission will shift into neutral when parking brake is engaged and remains in neutral when parking brake is disengaged). Is this option available?

YES or No

SKETCH FROM PALFINGER



DOCUMENTS TO BE SUBMITTED WITH BID PROPOSAL:

- A) This Completed bid packet. Put price sheet in front of packet.
- B) Bid deposit as described on Page 1, Paragraph 4. Please mark so that it is easy to find with bid packet.
- C) Copies of warranties offered.
- D) Pamphlets and/or brochures depicting features of unit bid.

QUESTIONS?

For questions, contact Mike Elde or Rick Owens at 360-416-1490.

BID ITEM: ONE NEW LATEST MODEL BOOM TRUCK CHASSIS
Bid Opening: April 3, 2017 @ 2:30 PM

NAME OF COMPANY: _____
ADDRESS: _____
BY: _____ TITLE: _____
TELEPHONE NUMBER: _____

PRIMARY PROPOSAL (Includes 18-Speed Transmission)

Cab & Chassis: List Year _____ Model _____ Manufacturer _____

TOTAL BID PRICE: \$ _____

ADD SALES TAX: \$ _____

TOTAL OUT-OF-POCKET COST TO SKAGIT COUNTY: \$ _____

SECONDARY PROPOSAL (Include Option 1: Automatic Transmission)

Cab & Chassis: List Year _____ Model _____ Manufacturer _____

TOTAL BID PRICE: \$ _____

ADD SALES TAX: \$ _____

TOTAL OUT-OF-POCKET COST TO SKAGIT COUNTY: \$ _____